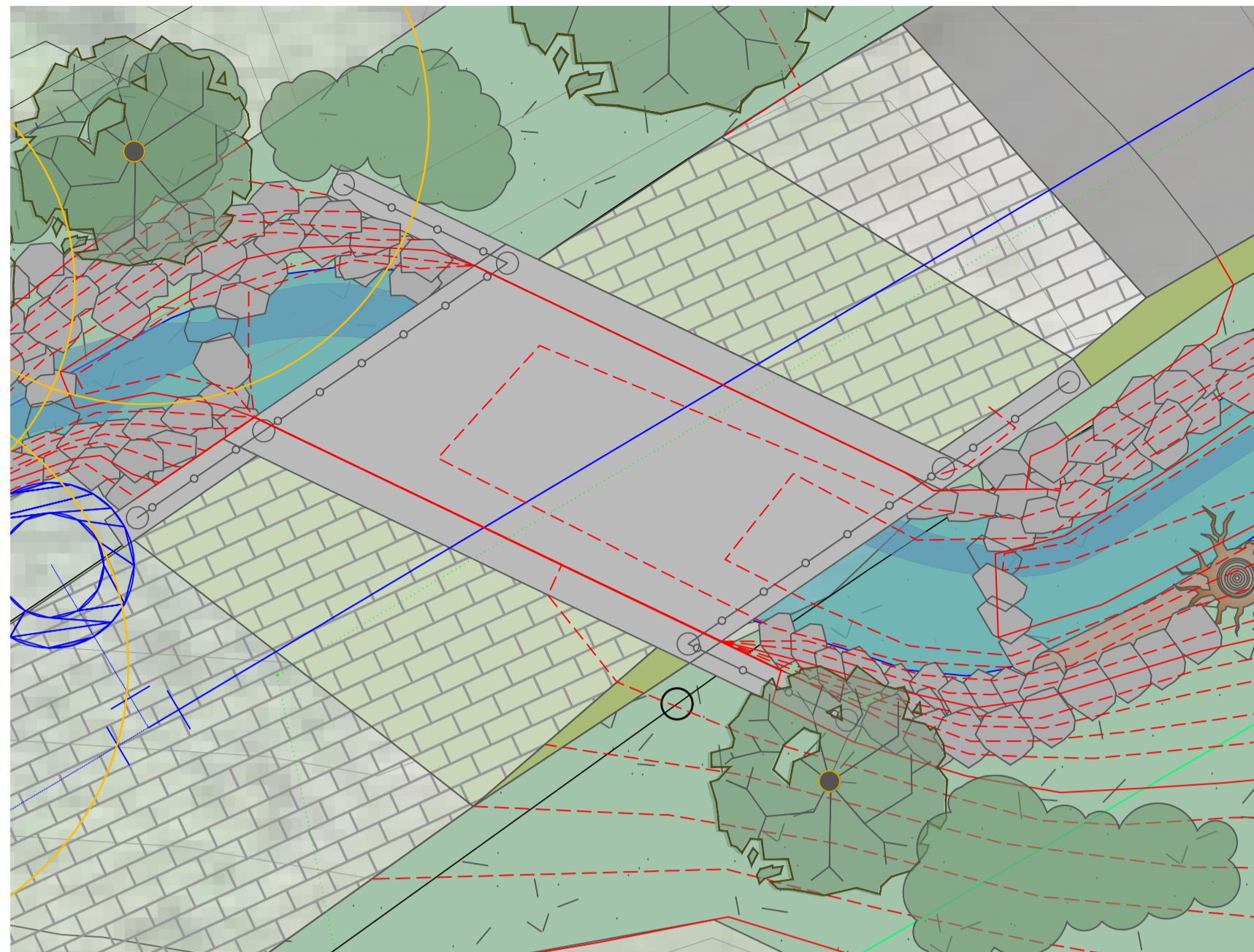
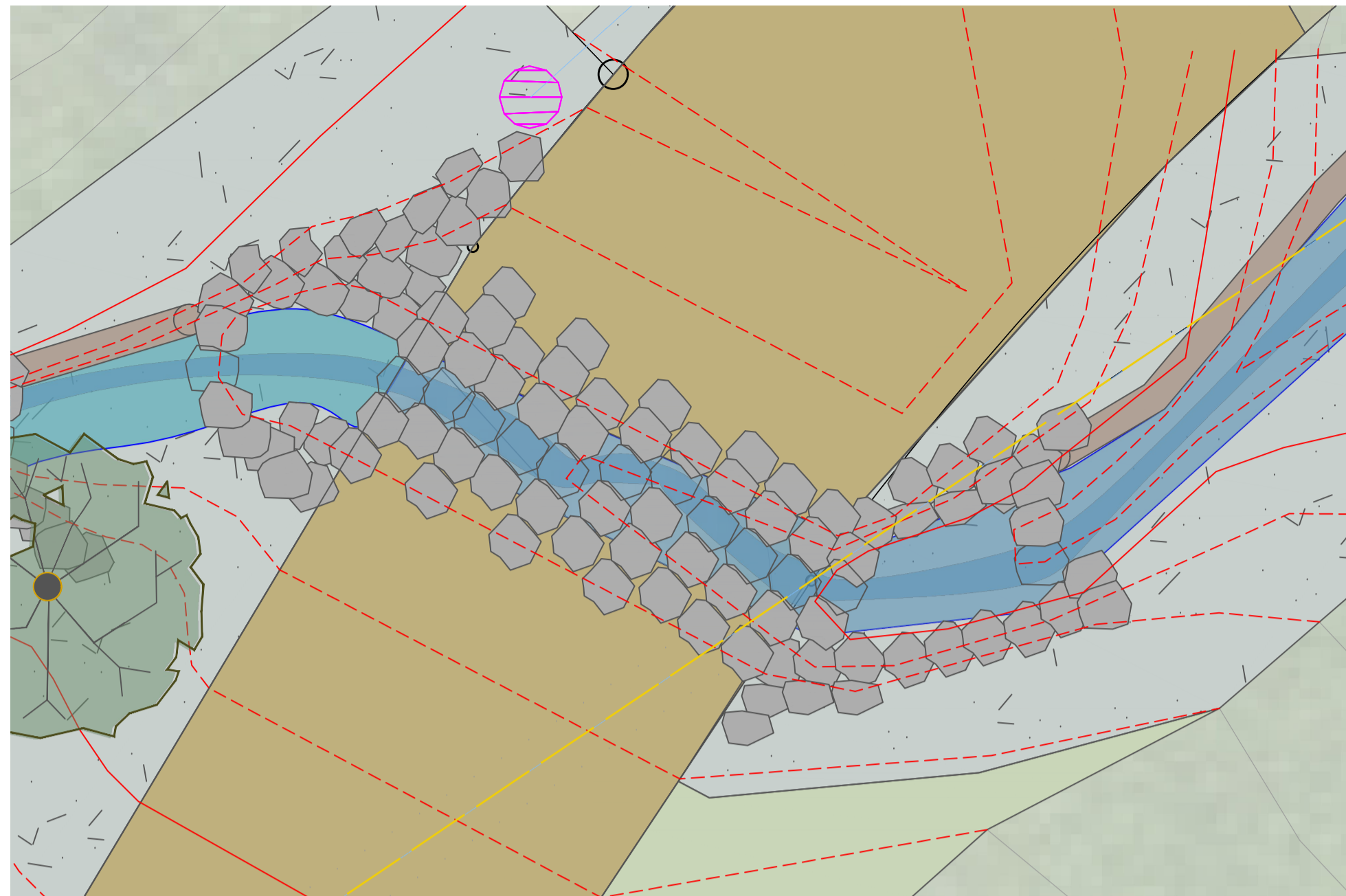


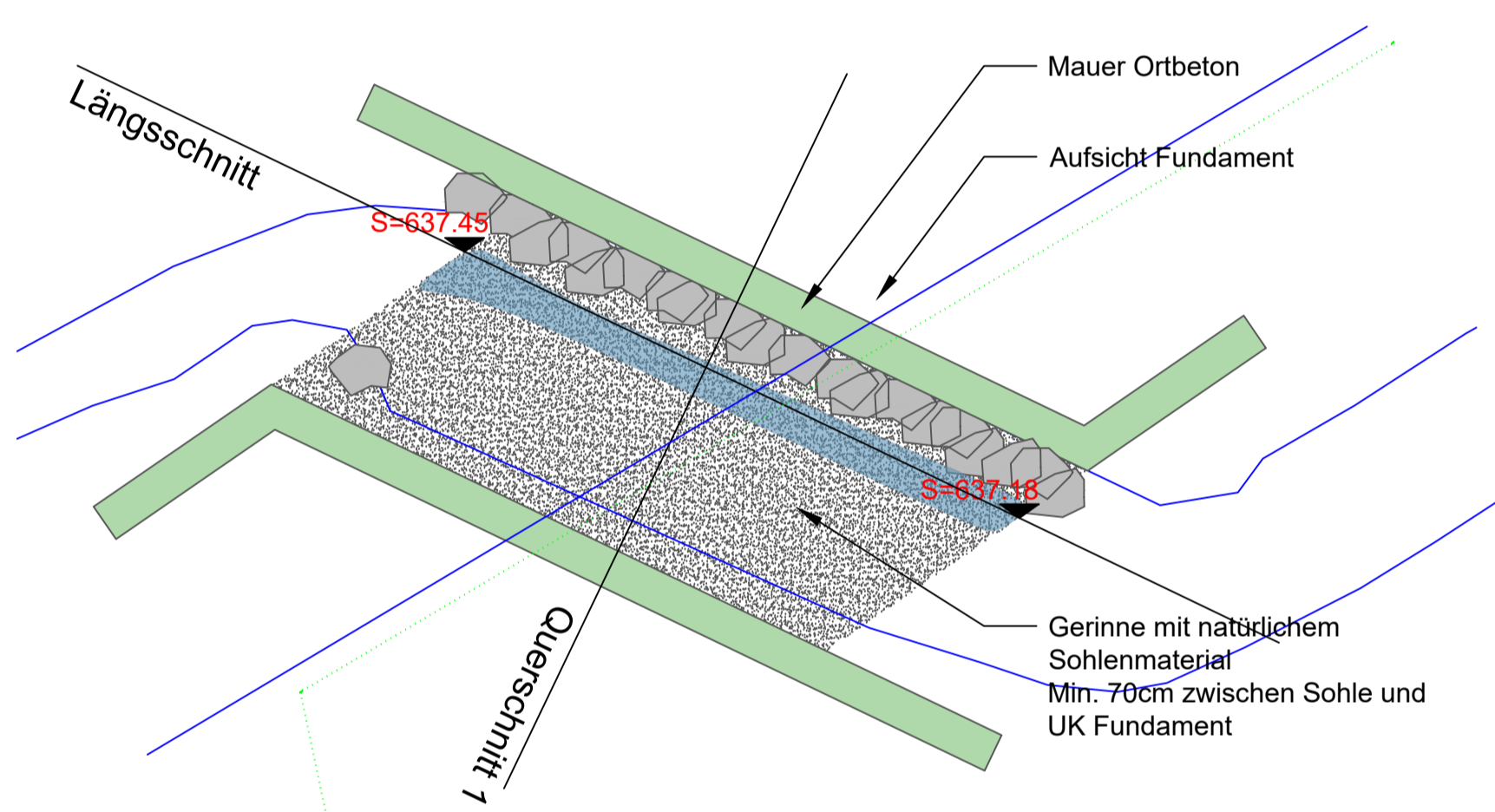
Situation Lochweg 1:50



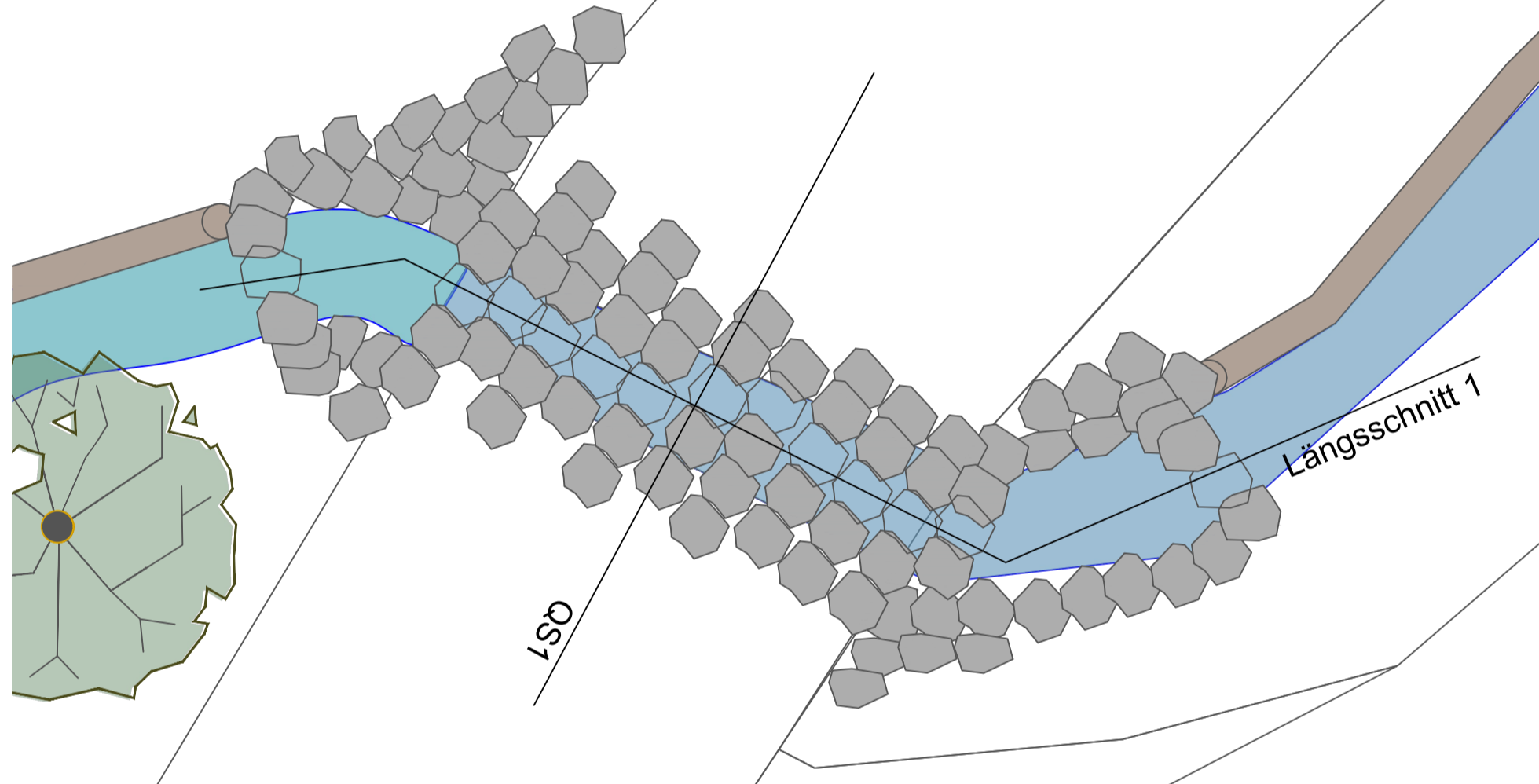
Situation Furt 1:50



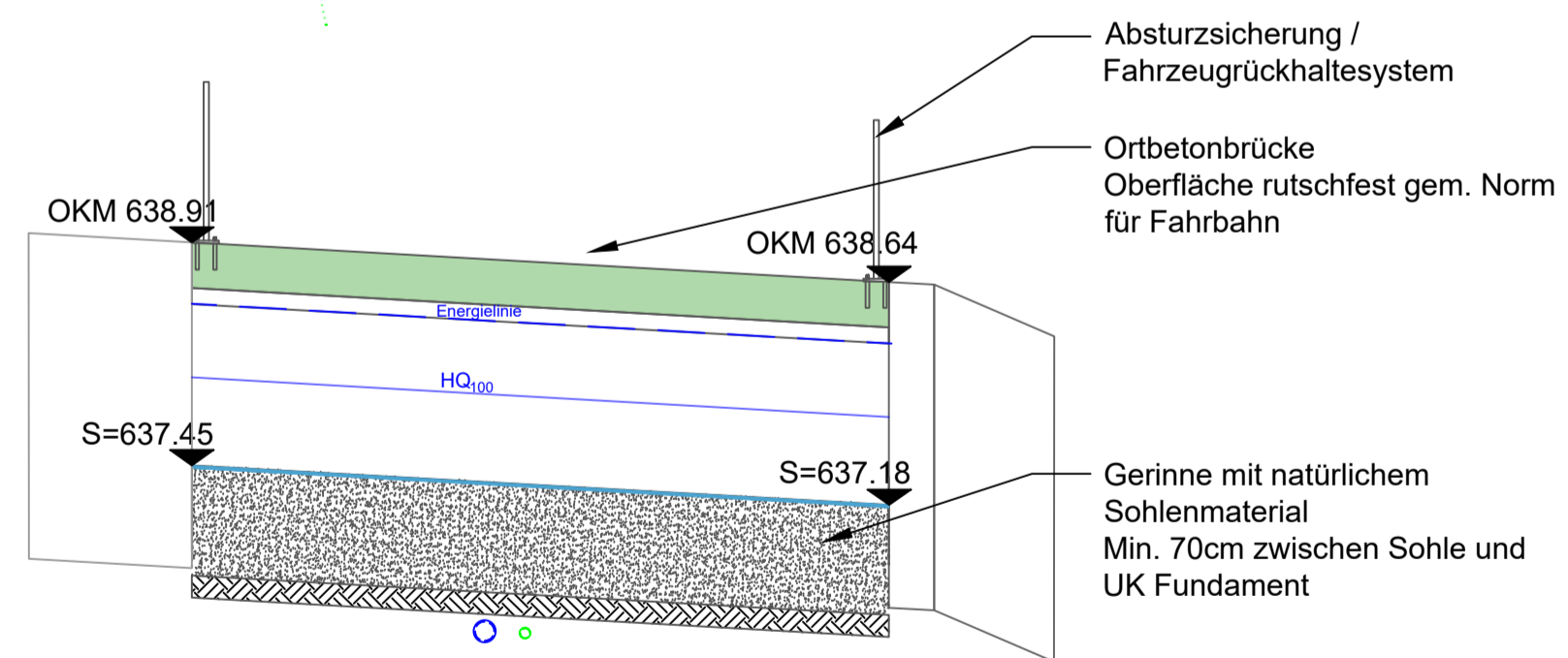
Situation Durchlass, Bachsohle 1:50



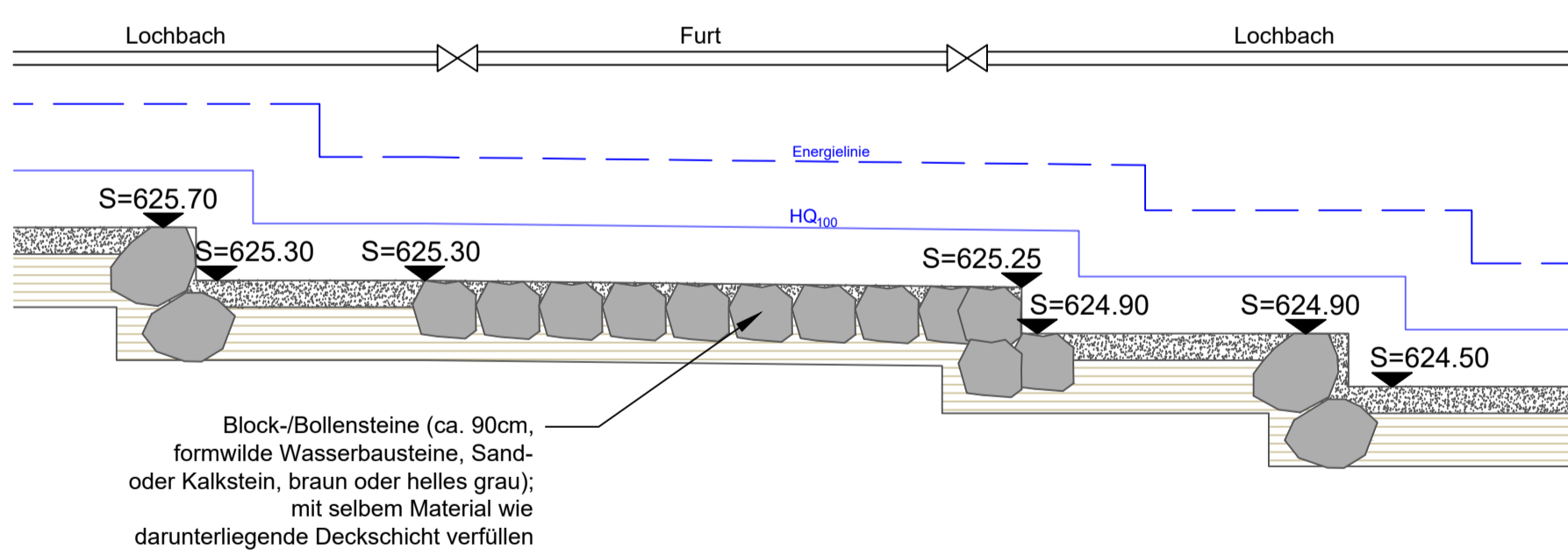
Situation Furt, Bachsohle 1:50



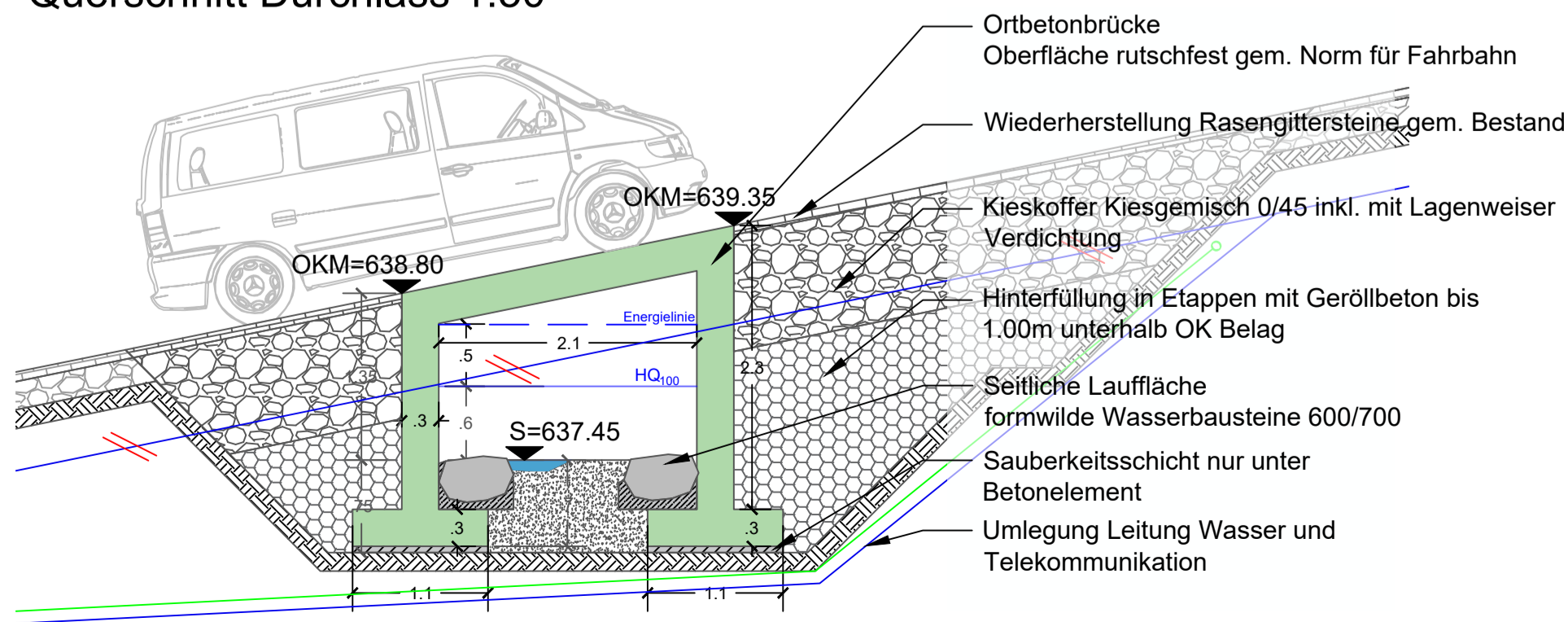
Längsschnitt Durchlass 1:50



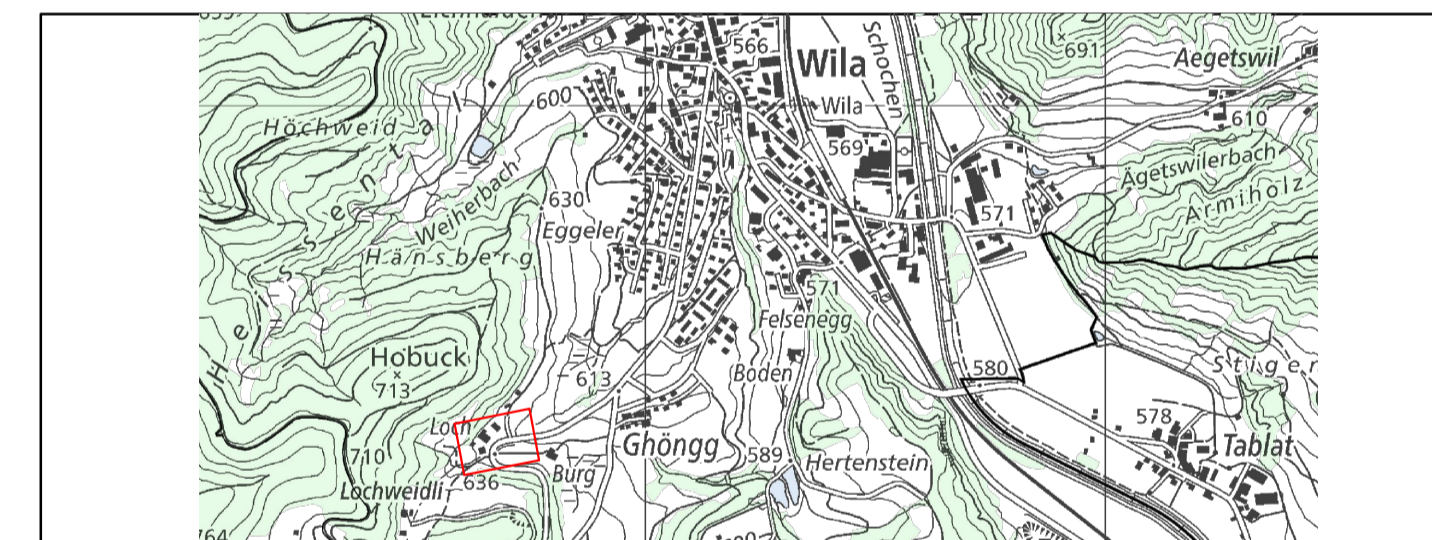
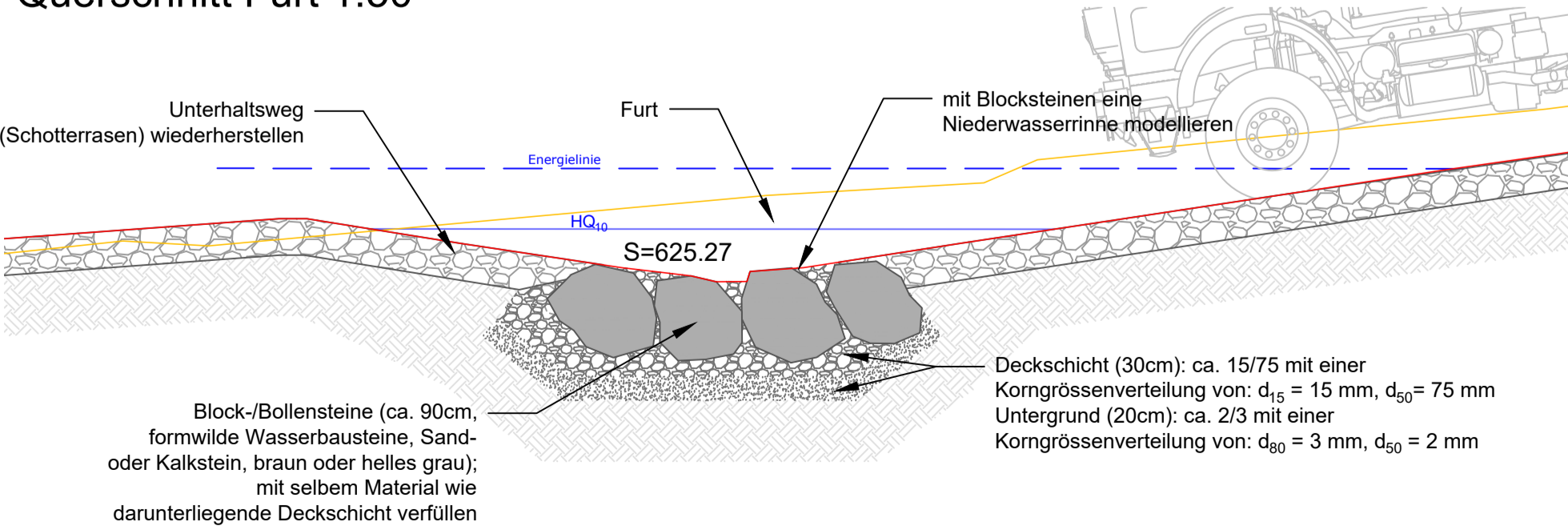
Längsschnitt Furt 1:50



Querschnitt Durchlass 1:50



Querschnitt Furt 1:50



Hochwasserschutz Lochbach

Bachdurchlässe mit Ausdolung

Detailplan Durchlass Lochweg und Furt

Gemeinde Wila, Kanton Zürich

Auflageprojekt

| Rev. | Datum | Gez. | Gep. |
|--------------------------------|------------|----------------------|------|
| 0 | 15.11.2024 | MJJ | SDT |
| Projektnummer 115009373-001 | | | |
| Massstab 1:50 | | Format 594 x 1470 | |
| Plannummer AP-1006 | | Revision 0 | |



AFRY Schweiz AG
Herstrasse 12
8048 Zürich/Schweiz
Telefon +41 44 355 55 55
www.afry.ch