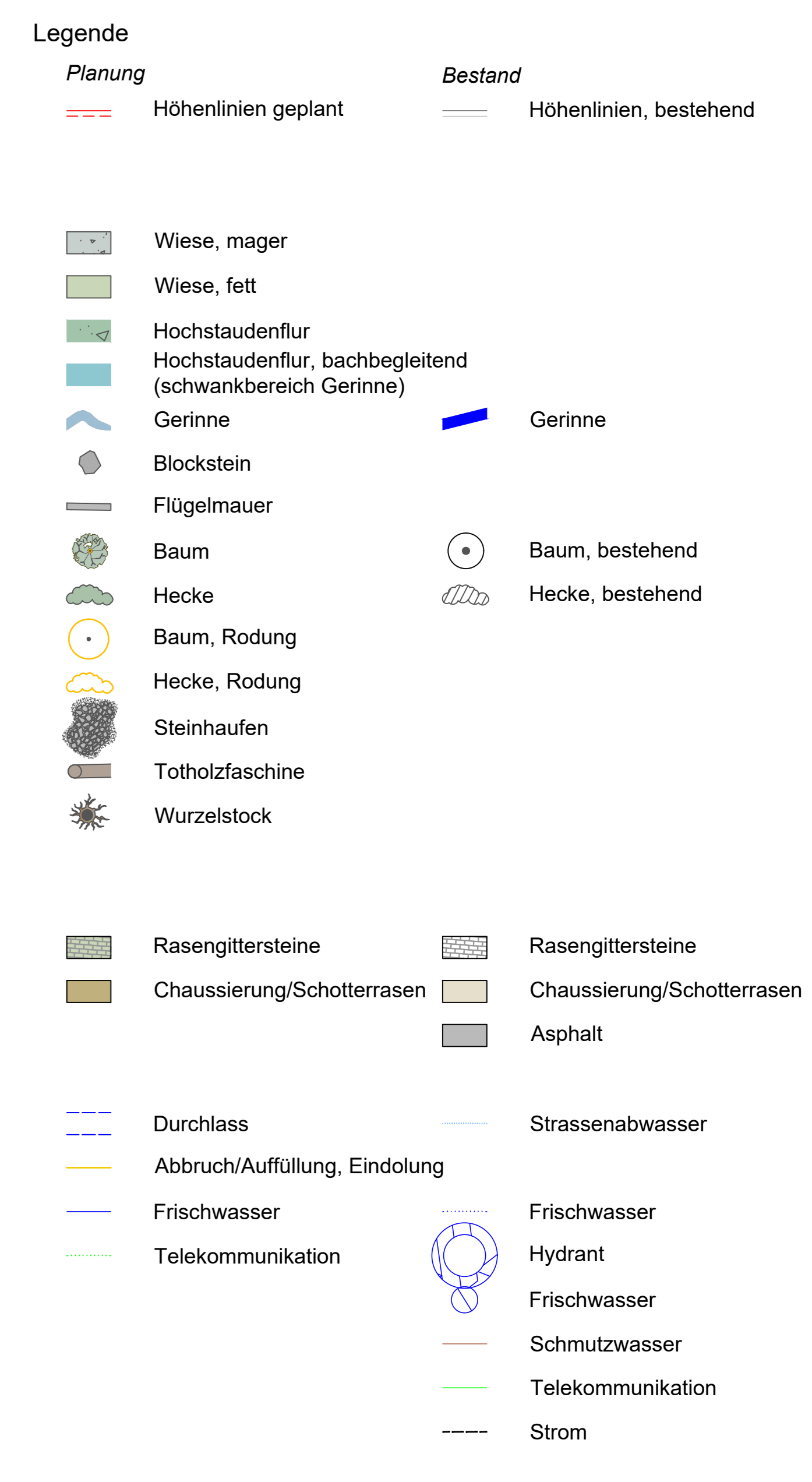
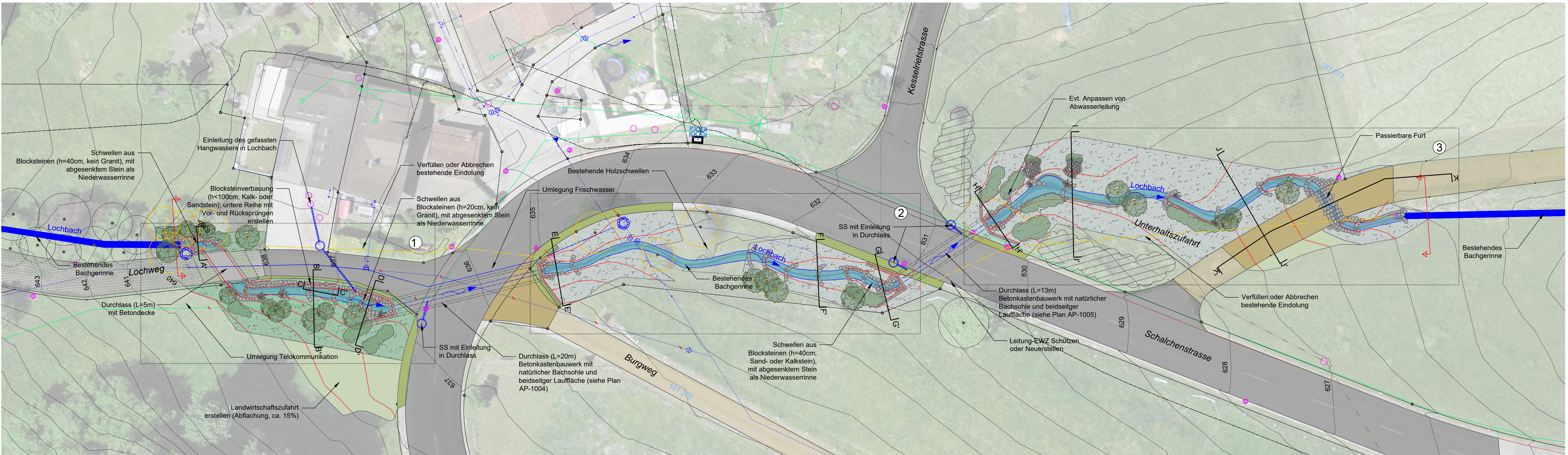
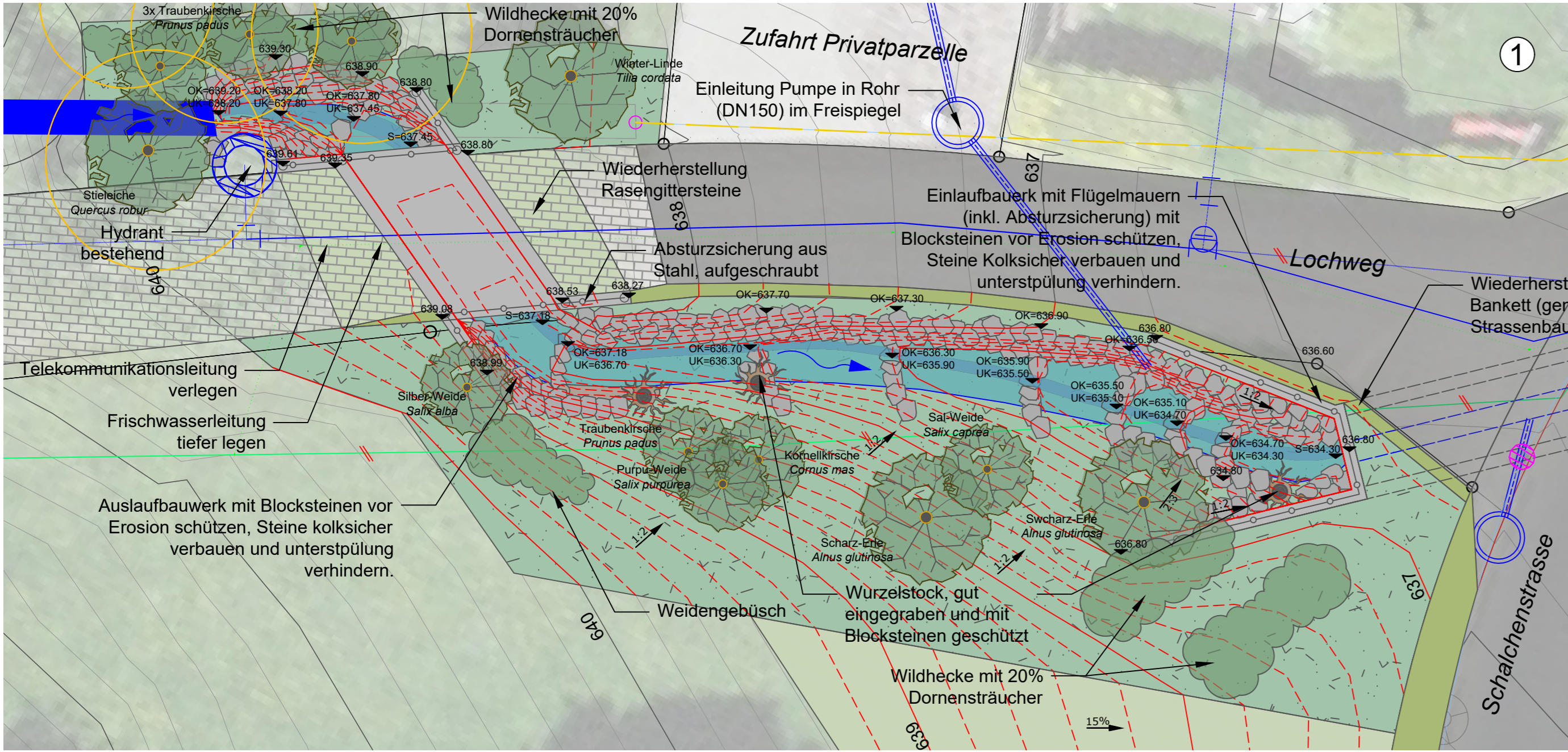


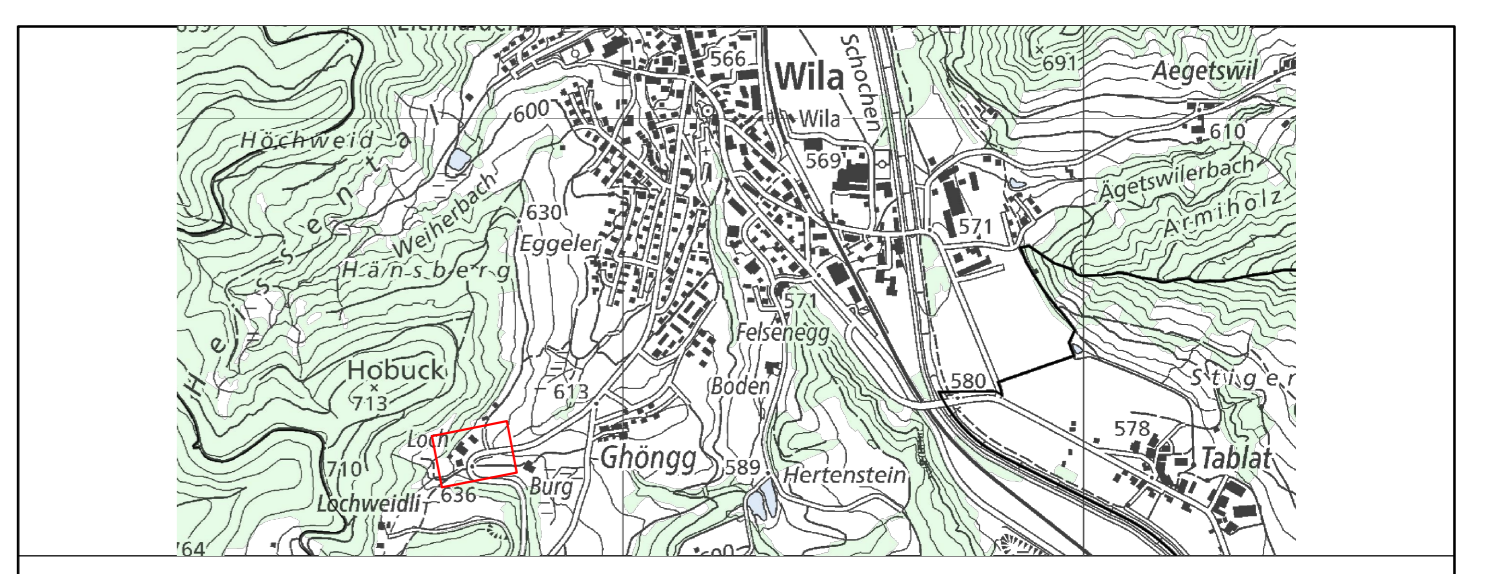
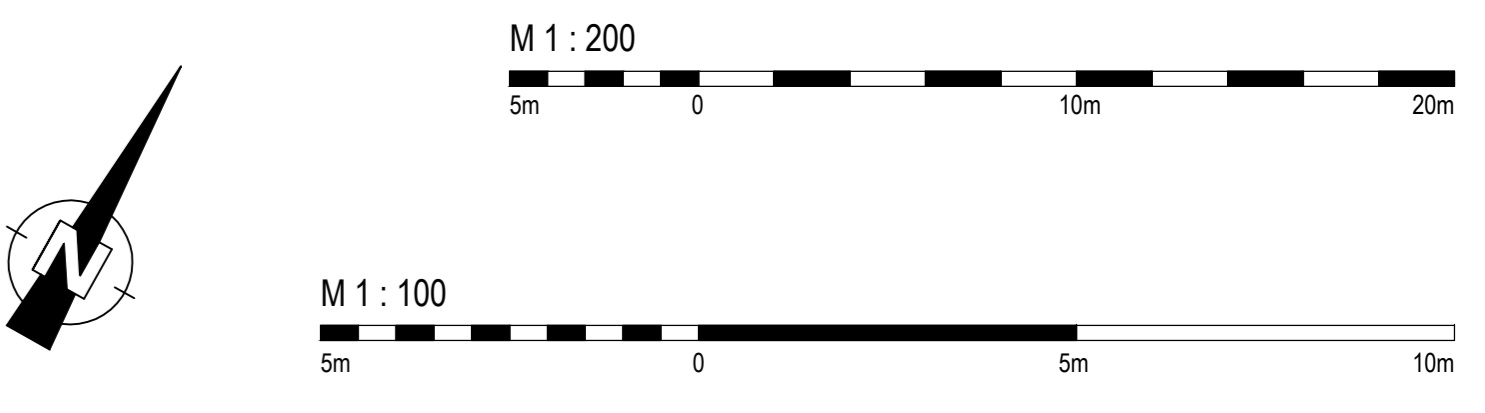
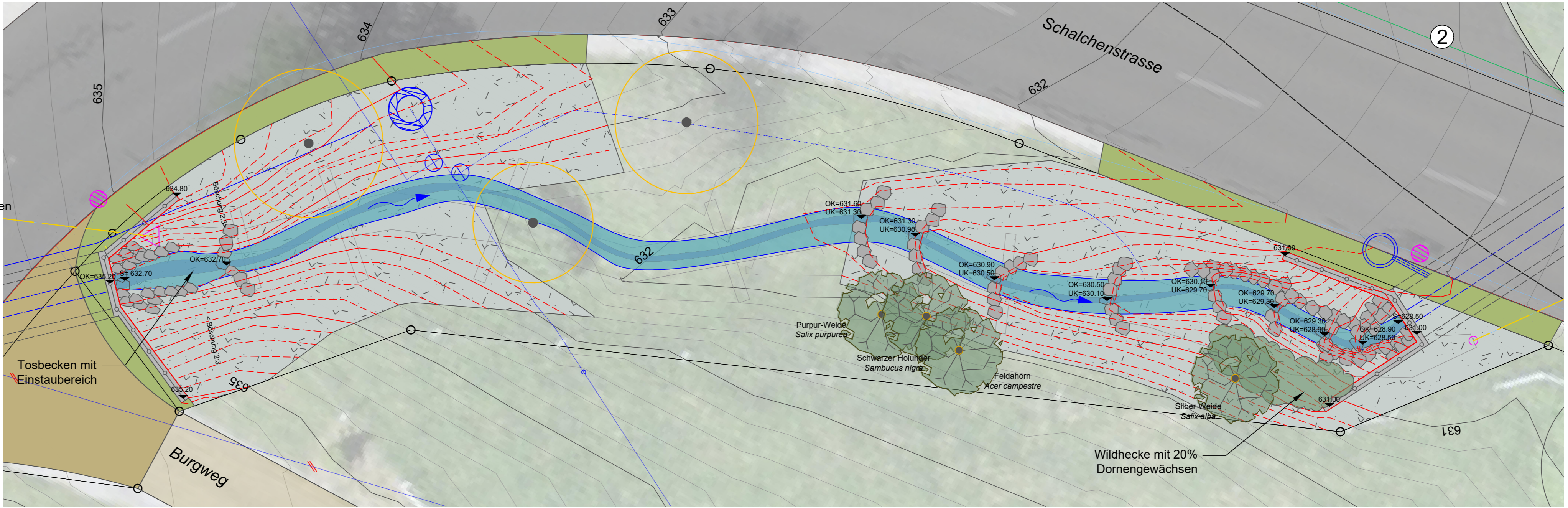
Situation 1:200



Ausschnitt 1 Situation 1:100



Ausschnitt 2, Situation 1:100



Hochwasserschutz Lochbach

Bachdurchlässe mit Ausdolung

Situation

Gemeinde Wila, Kanton Zürich

Auflageprojekt

Rev.	Datum	Gez.	Gez.
0	15.11.2024	MLJ	SDT
Projektnummer: 115009373-001			
Maststab: 1:100, 1:200		Format: 841 x 1189	
Planummer: AP-1001		Revision: 0	

AFRY
AFRY Schweiz AG
Horststrasse 12
8048 Zürich-Schweiz
Telefon +41 44 355 55 55
www.afry.ch

Ausschnitt 3, Situation 1:100

